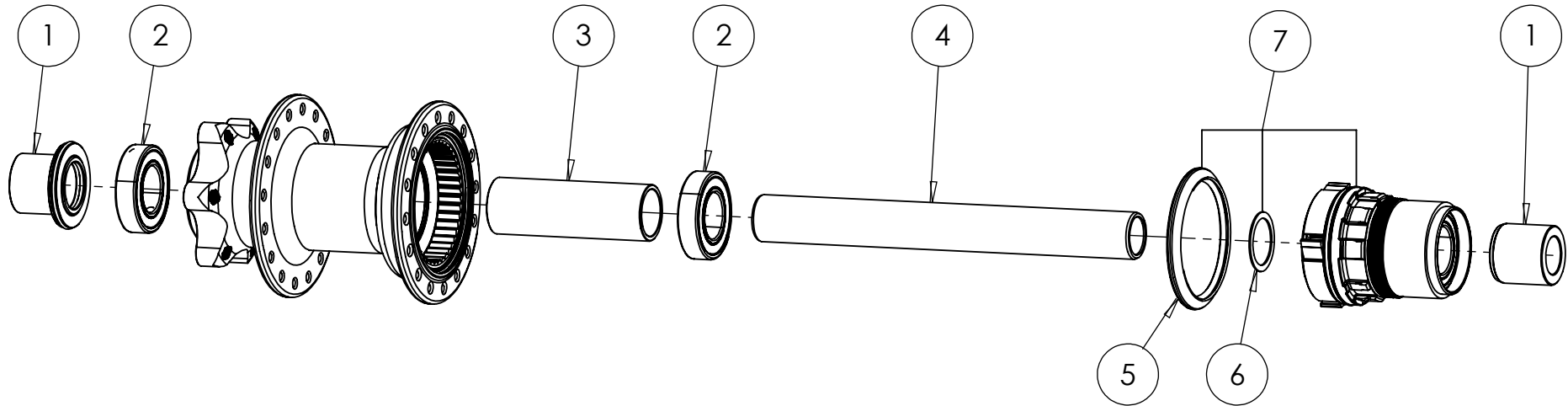




# REAR HUB ASSEMBLY



|            | 1<br>End Cap Options |                  | 2<br>Bearings | 3<br>Axle Spacer | 4<br>Axle    | 5<br>Seal | 6<br>Spacer | 7<br>Freehub Options |        |              |
|------------|----------------------|------------------|---------------|------------------|--------------|-----------|-------------|----------------------|--------|--------------|
|            | XDR/HG               | Micro Spline     |               |                  |              |           |             | XDR                  | HG     | Micro Spline |
| Hub Model  | Kit (ID)*            | Kit (ID)*        | Kit           | Kit (ID)*        | Kit (ID)*    | Kit       | Kit         | Kit                  | Kit    | Kit          |
| 10X135, QR | ZH0780 (E11,E12)     | N/A              | ZH2582        | ZH0786 (S01)     | ZH2061 (A82) | ZH2575    | ZH2574      | ZH2577               | ZH2579 | N/A          |
| 12X142, TA | ZH0779 (E15,E16)     | ZH2168 (E15,E84) | ZH2582        | ZH0786 (S01)     | ZH2061 (A82) | ZH2575    | ZH2574      | ZH2577               | ZH2579 | ZH2578       |
| 12X148, TA | ZH0779 (E15,E16)     | ZH2168 (E15,E84) | ZH2582        | ZH0788 (S03)     | ZH2062 (A80) | ZH2575    | ZH2574      | ZH2577               | ZH2579 | ZH2578       |
| 12X150, TA | ZH0779 (E15,E16)     | N/A              | ZH2582        | ZH0790 (S05)     | ZH2063 (A81) | ZH2575    | ZH2574      | ZH2577               | ZH2579 | N/A          |
| 12X157, TA | ZH0779 (E15,E16)     | ZH2168 (E15,E84) | ZH2582        | ZH0790 (S05)     | ZH2063 (A81) | ZH2575    | ZH2574      | ZH2577               | ZH2579 | ZH2578       |
| 10X135, QR | ZH0957 (E17, E12)    | N/A              | ZH2582        | ZH0995 (S21)     | ZH2061 (A82) | ZH2575    | ZH2574      | ZH2577               | ZH2579 | N/A          |
| 12X142, TA | ZH0956 (E19,E16)     | ZH2169 (E19,E84) | ZH2582        | ZH0995 (S21)     | ZH2061 (A82) | ZH2575    | ZH2574      | ZH2577               | ZH2579 | ZH2578       |
| 12X148, TA | ZH0956 (E19,E16)     | ZH2169 (E19,E84) | ZH2582        | ZH2566 (S29)     | ZH2062 (A80) | ZH2575    | ZH2574      | ZH2577               | ZH2579 | ZH2578       |
| 12X150, TA | ZH0956 (E19,E16)     | N/A              | ZH2582        | ZH2567 (S44)     | ZH2063 (A81) | ZH2575    | ZH2574      | ZH2577               | ZH2579 | N/A          |
| 12X157, TA | ZH0956 (E19,E16)     | ZH2169 (E19,E84) | ZH2582        | ZH2567 (S44)     | ZH2063 (A81) | ZH2575    | ZH2574      | ZH2577               | ZH2579 | ZH2578       |

\*ID codes are printed on the part for easy reference